

MORE FLEXIBLE MORE POSSIBLE

S-FLEX SERIES



MWT- Lightweight Flexible Solar Module

S-Flex solar module — Developed specifically for distributed photovoltaics. The weight is only 30% of conventional glass solar module and the installation efficiency is increased by 60%, which effectively solved the load bearing problems of the roof top.

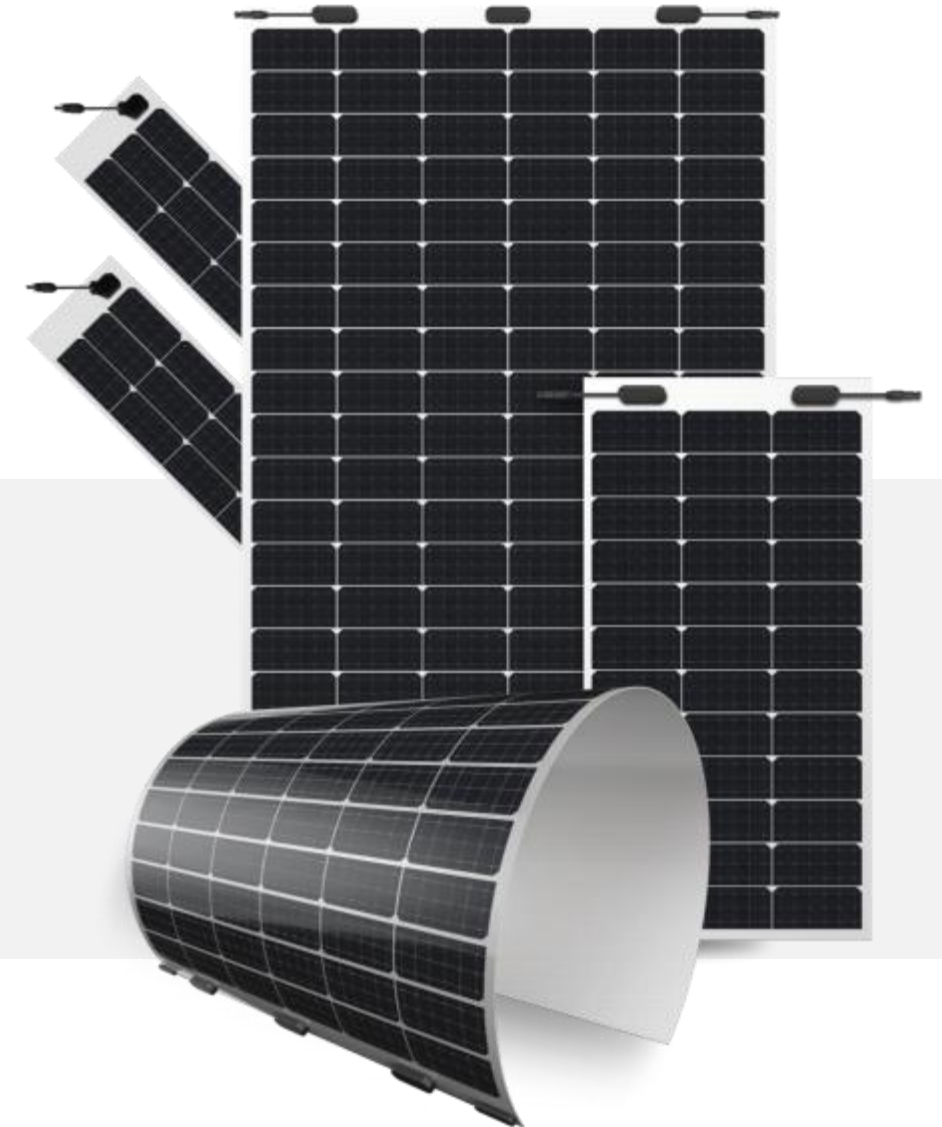
 Dimension
1840*1040*2.5mm

 Weight per unit area
2.98kg/m²

 Cell size
166mm(half cut)

 Power range
360~385W

 Weight
5.7kg



S-FLEX—Value Proposition



Light, Thin Design

1.4mm thickness,
The weight of the whole series is only
1.3kg-4.7kg, leading level in PV industry



BIPV Application

Further integrate with buildings in terms
of shape and installation for BIPV
application



High Reliability

Conductive back sheet 2D encapsulation
without soldering, resulted lower degradation
under multiple extreme testing condition



Ultra Flexible

Ultra-thin silicon wafers with advanced
organic polymer encapsulation
materials, minimum bending radius
reach 0.25m



High Efficiency

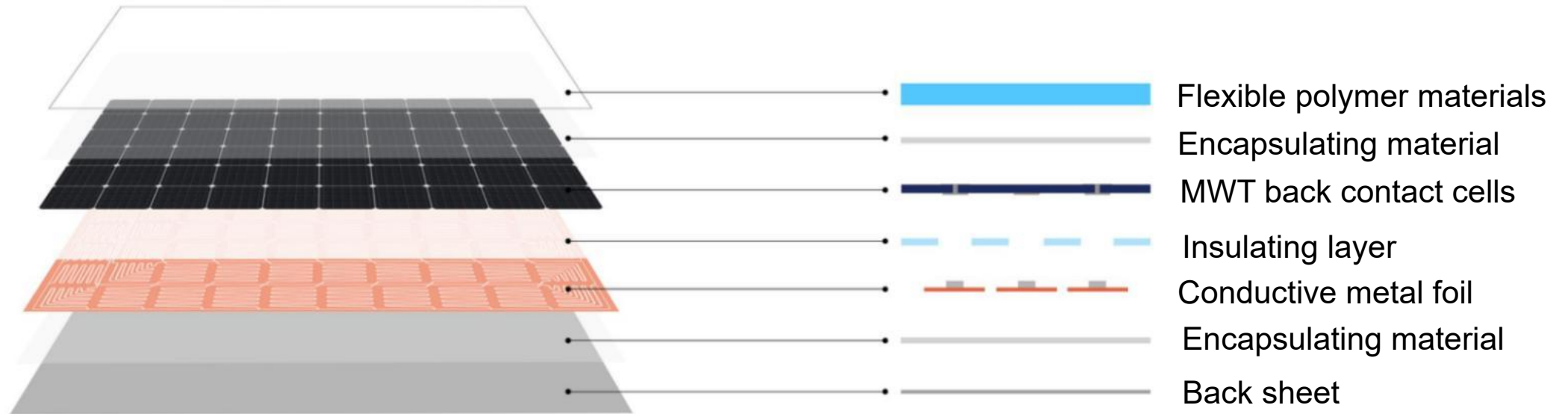
Busbar-free design increases
conversion efficiency over 0.2%,
exhibits higher power output in the
same area



Lead Free

Eco-friendly PV design achieves Lead-
free MWT module without soldering
materials

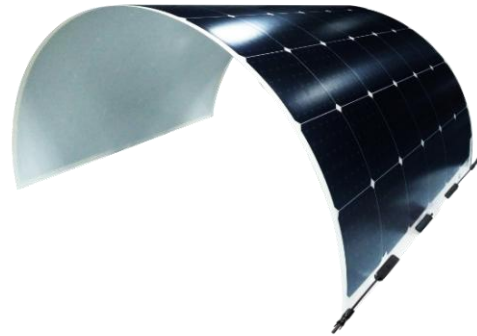
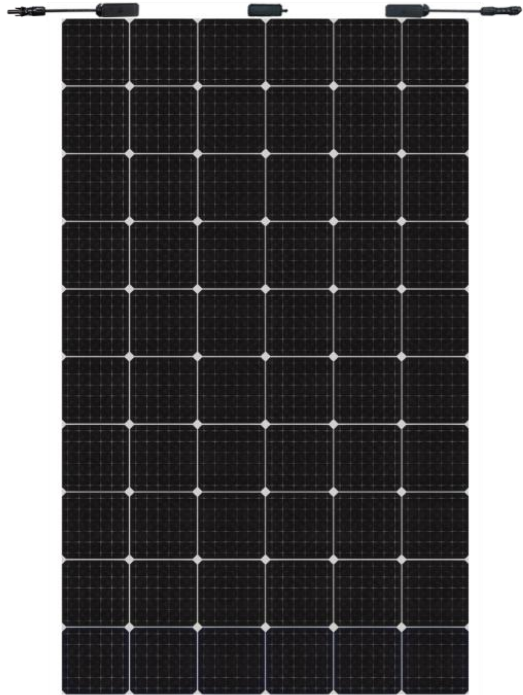
Module Stacking Structure



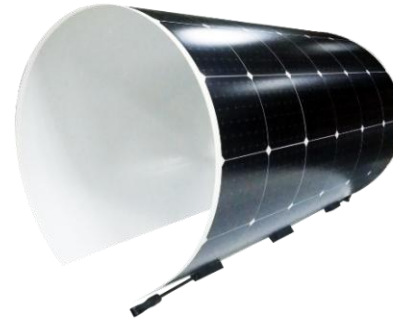
Flexible polymer materials + Unique PCB encapsulation technology
+ MWT back contact cells + Conductive metal foil = **S-FLEX Module**



S-FLEX—Tests under Various Bending Radius



$r = 0.5 \text{ m}$



$r = 0.35 \text{ m}$



$r = 0.25 \text{ m}$

I-V and EL testing after keeping the modules under different radius for 10 minutes



S-FLEX—Reinsurance Coverage for 25 Years



Insured by LLOYD'S

LLOYD'S

12 year
Quality
Warranty

25 year
Performance
Warranty

The image shows a formal document titled "Insurance Coverage Declaration" from LLOYD'S Underwriters. It includes the Ariel Re logo and text confirming that Ariel Syndicate 1910 of Lloyd's reinsures a Solar Photovoltaic Module Replacement Cover policy for Sunport Power Corp., Ltd. The document lists specific insurance terms, including a 25-year coverage period for flexible modules, immediate effectiveness, non-cancellability, and backing for Sunport's limited warranty. It also mentions the reinsurer's financial strength ratings (A.M. Best 'A', S&P 'A+', Fitch AA-). The document is signed by an authorized representative of LLOYD'S SYNDICATE 1910 (Ariel Re).

Insurance Coverage Declaration

We herewith confirm that Ariel Syndicate 1910 of Lloyd's reinsures the Policy (Solar Photovoltaic Module Replacement Cover – Manufacturer Corporate Insurance Policy), originally issued by PICC Jiangsu Branch to the following Policyholder:

Jiangsu Sunport Power Corp., Ltd [Sunport]
No.20, Xishi Road, Xinwu District, Wuxi, Jiangsu Province, China

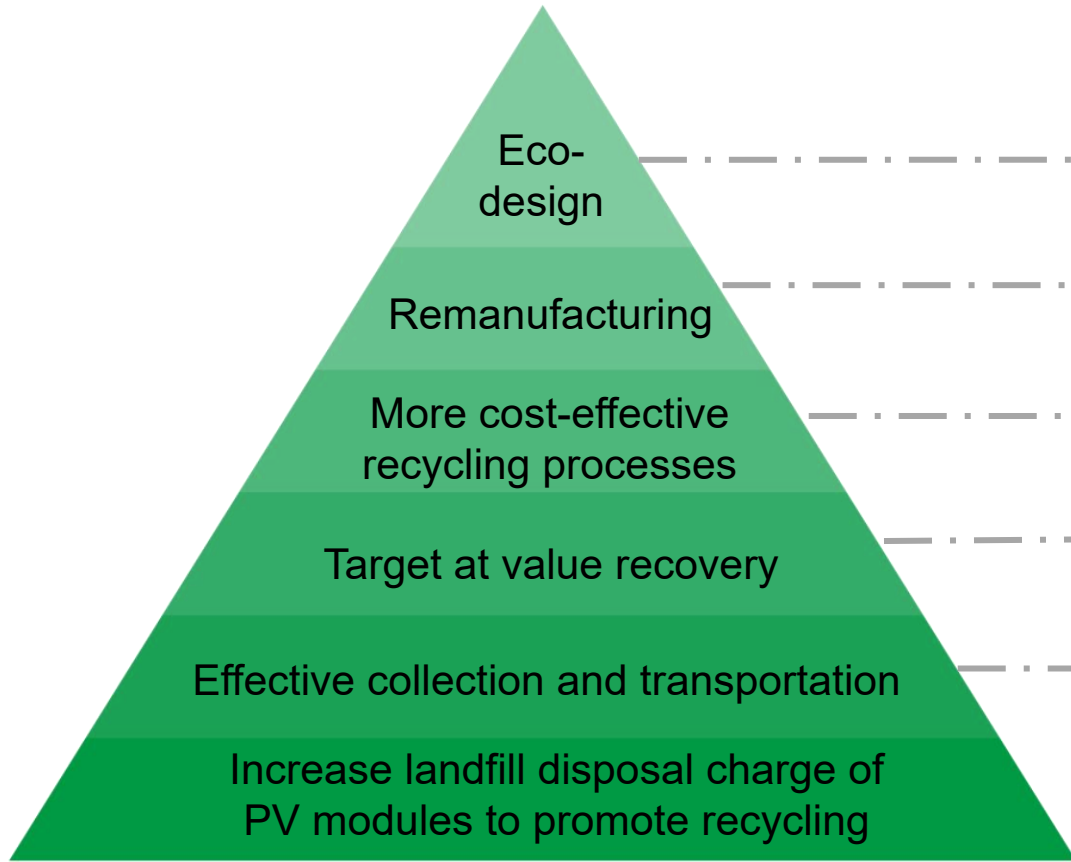
Manufacturer Corporate Insurance Policy provides backing to Sunport's Limited Product and Power Warranty to protect both Sunport's and its Photovoltaic module buyers that are registered under this Policy during the Policy Period of 15th Oct 2019 to 14th Oct 2021. The agreed upon insurance terms and conditions for the Manufacturer Corporate Insurance Policy includes:

- Insurance coverage for flexible module is 25 years
- Insurance coverage is effective immediately with NO waiting period for Beneficiary
- The insurance policy is not cancellable
- Insurance back-stops Sunport's Limited Warranty, including Product defect and Power Output
- In the event of insolvency of Sunport, those customers of Sunport's that are registered under the Policy will become Beneficiaries according to the terms and conditions of the Policy
- Insurance makes available Project Cover with customized insurance structure at Projects with Sunport's Photovoltaic modules covered under this Policy and qualified for coverage by the Insurer
- A.M Best 'A' (Excellent), S&P "A+" (Strong), Fitch AA- (Very Strong) rated reinsurer at time of issuing the declaration.

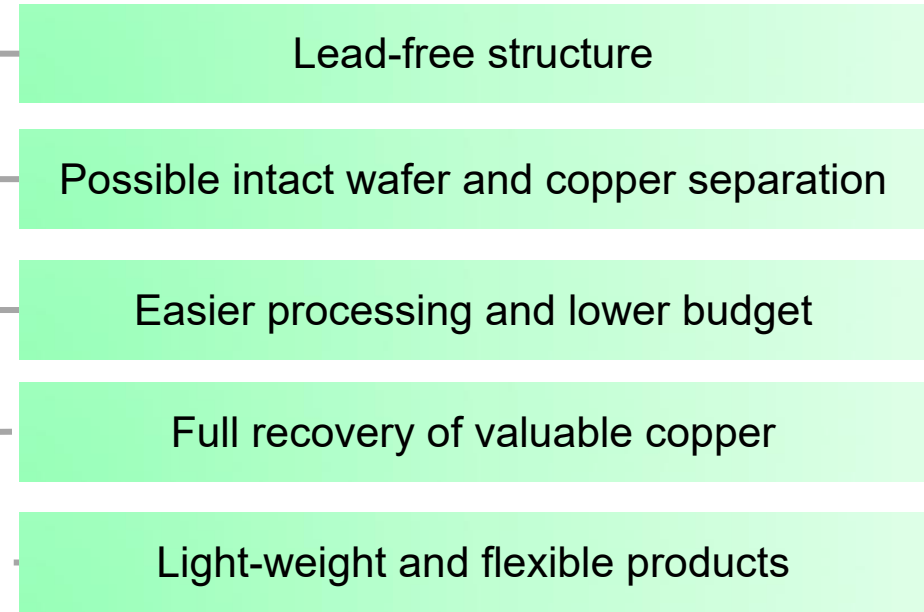
LLOYD'S SYNDICATE 1910 (Ariel Re)
Global Head Clean Energy

[Signature]
(Authorized Signature)

Disclaimer: This document does not contain all of the terms and conditions of the insurance policy which may potentially limit (or exclude) coverage. The content in this declaration is for reference only. The insurance coverage and exclusions shall be subject to the terms and conditions specified in the insurance contract. Please note that the insurance Policy is only binding and active if the full premium has been paid.



Pathways towards sustainable recycling



MWT merits in recycling economy



Application Scenarios



01

Logistics
park/warehouse
rooftop



JD Logistic
Park Project

...

02

Coal Shed



Buliangou
Thermal Project

...

03

Animal husbandry
rooftop



Fujian Animal
Husbandry Park
project

...

04

Automobile and
Flight Industry
rooftop



Geely Auto Plant
Project

...

05

Old Factory
Rooftop



Japan Project

...

06

Movement and
Irregular shaped
rooftop



Caravan Project

...

S-FLEX—Installation Method and Advantages



S-FLEX Module **VS** Conventional Module

65%

Labor cost saves by 65%

50%

Mechanical cost reduces by 50%

72%

Material cost cuts down by 72%

20%

Project progress improves by 20%

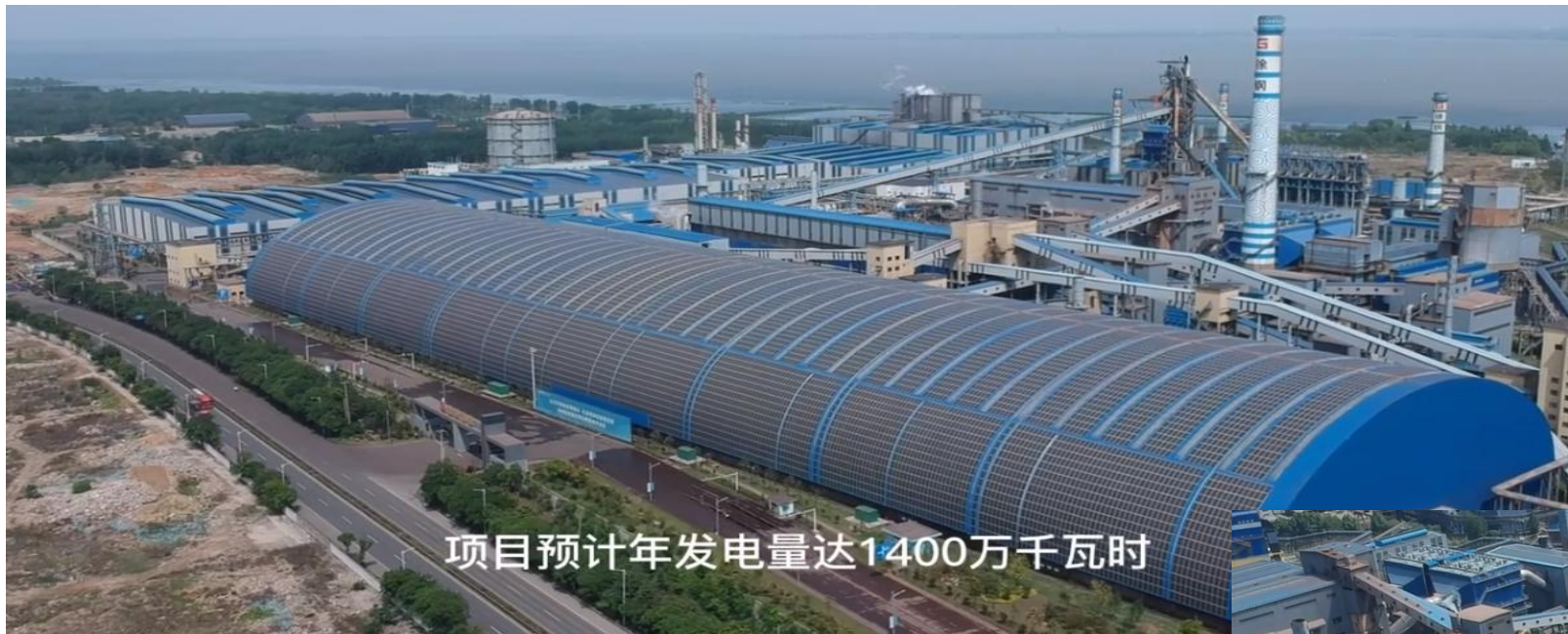
- **PVC/TPO Roof** : Stick
- **Steel Tile Roof**: Stick/Stick+Rivet
- **Irregular Steel Tile Roof**: Stick+Support Plate
- **Cement Roof**: Stick
- **Facades**: Stick



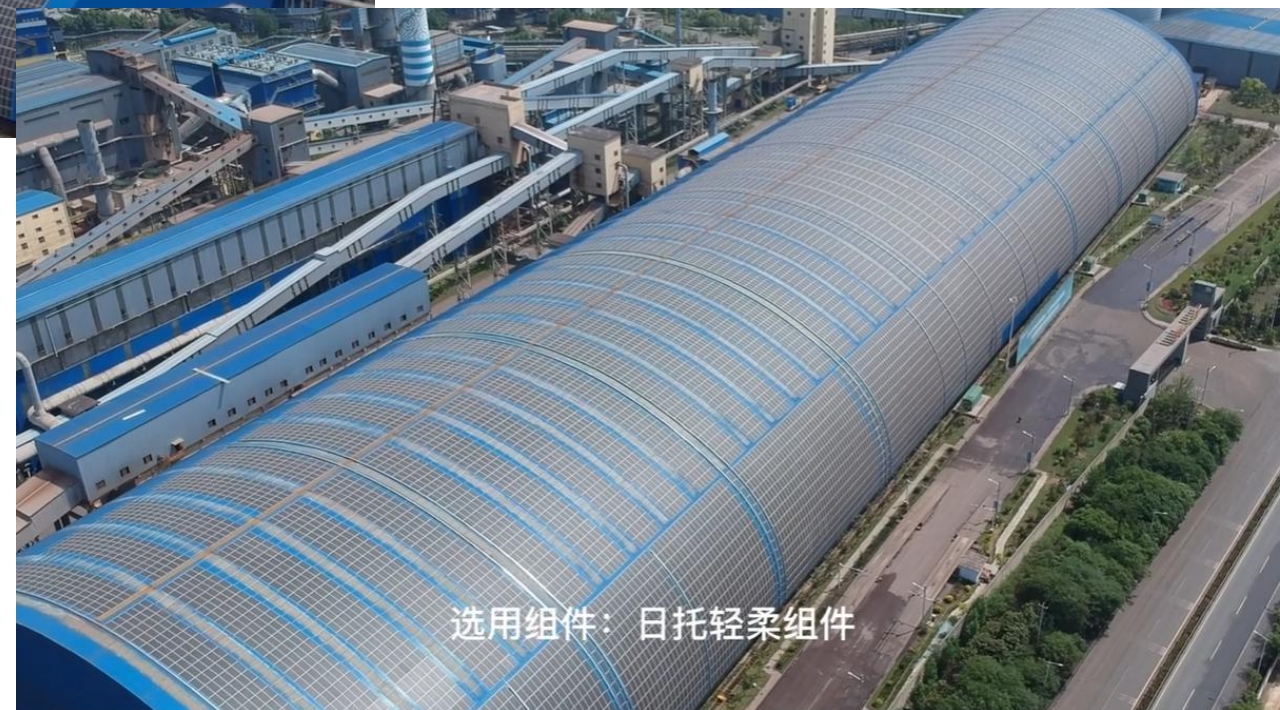
Location: The Netherlands,
Brabant hall project-indoor ski slop
Capacity: 1.8MW
Installation Form: Stick



Case Study



项目预计年发电量达1400万千瓦时



选用组件：日托轻柔组件

Location: XUZHOU, CHINA, steel factory

Capacity: 11.5MW

Installation Form: Stick

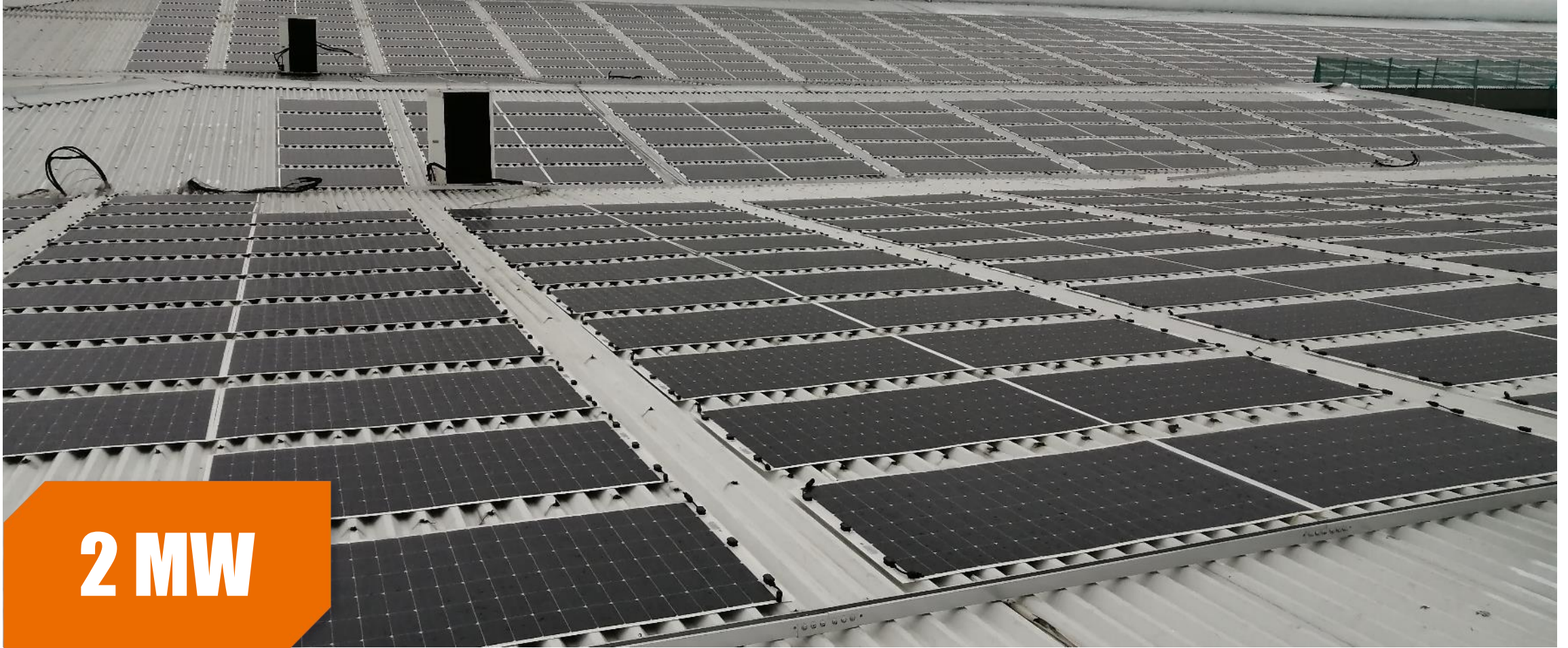
Roof type-Colored steel tile roof



3.56 MW

Location: Beijing, China·Asia No.1 Warehouse
Capacity: 3.56MW

Roof type-Colored steel tile roof



2 MW

Location: Wuxi, China

Metal Curved Surface



800kW

Location: Fujian, China
Railway Station

徐州停车棚项目

Metal Curved Surface



Location: Inner Mongolia, CHina

Cement roof+waterproof membrane



location: Shandong, China



PVC roll Roof



8 MW

Location: Zhejiang, China

PVC Roof Top



Location: The Netherlands-

Giant Bicycle factory

Capacity: 600kW

Installation Form: Stick

Asphalt waterproof roll material Rooftop



Location: Shanghai, CHINA

Ceramic tile roof



Location: Guangdong, China

Old tile roof



Location: Wuxi, China

Customized small size panels



Location: Henan, China

Capacity: 25kW

Installation Form: Stick

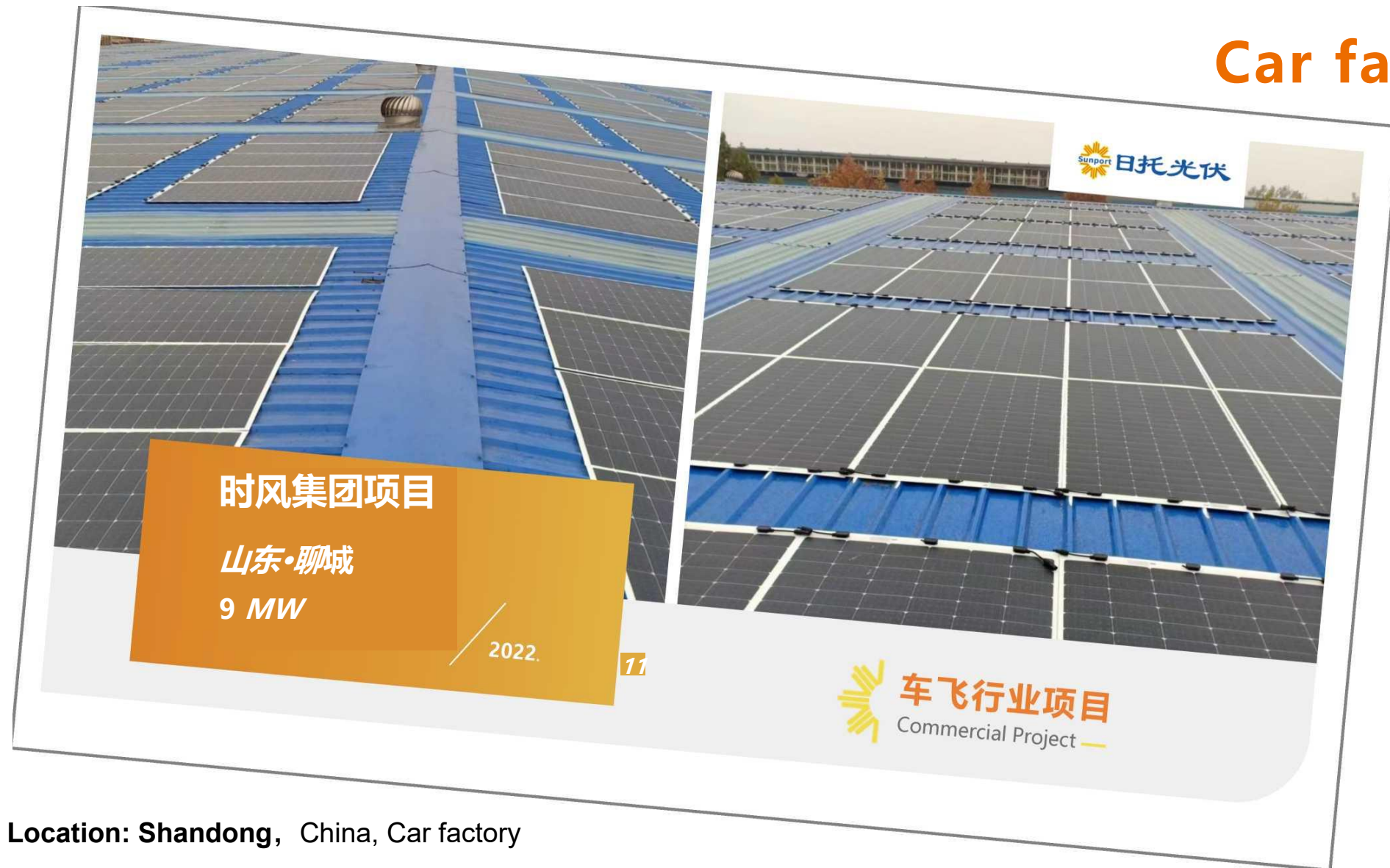


Location: Japan

Capacity: 290kW

Installation Form: Stick

Car factory



Location: Shandong, China, Car factory

Capacity: 9MW

Installation Form: Stick



奔驰汽车项目

北京·大兴 115 KW / 2019.12

**Location: Beijing, China, Benz
factory**

Capacity: 115KW

Installation Form: Stick



宝马汽车项目

北京·丰台 1.5 MW / 2022.11

车飞行业项
Commercial Project

**Location: Beijing, China, BMW Car
factory**

Capacity: 1.5MW

Installation Form: Stick



吉利汽车项目

Location: Zhejiang, China,

JL car factory

Capacity: 8MW

Installation Form: Stick

车飞行业项
Commercial Project



一汽红旗汽车项目

吉林·长春

4.75 MW

2022.09



Location: Jilin, China, FAW Red
Flag car factory

Capacity: 4.75MW

Installation Form: Stick



威睿汽车项目

浙江·慈溪

2.88 MW

2022.07

Location: Zhejiang Province,
China, Viridi E-Mobility factory

Capacity: 2.88MW

Installation Form: Stick



i

正鼎汽车零部件项目

星宇车灯项目

江苏·常州

5.99 MW

车飞行业项
Commercial Project

Location: Changzhou, China,
Xingyu Automotive Lighting Systems factory

Capacity: 5.99MW

Installation Form: Stick



Location: Shandong, China,
Atlas Tire factory
Capacity: 11MW
Installation Form: Stick

车飞行业项
Commercial Project

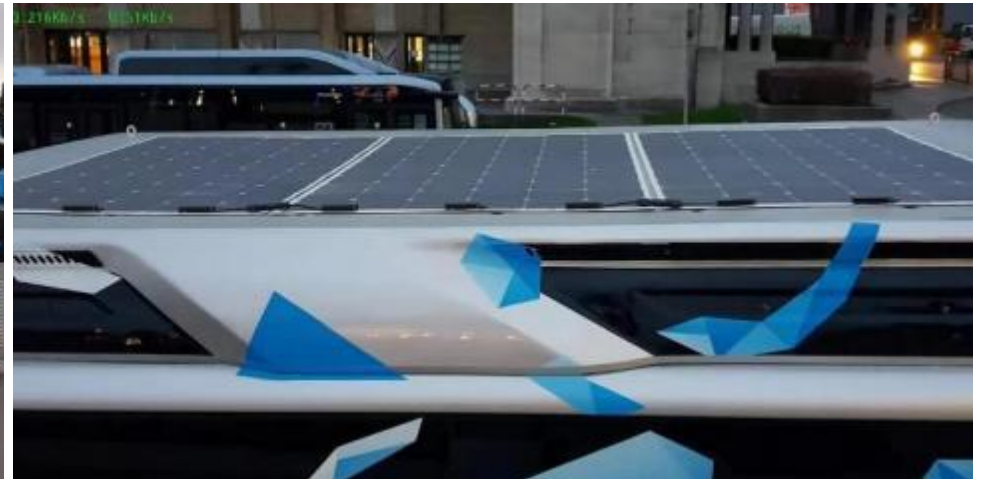
Movement and Irregular shaped Project



Belgium project



Turkey project



Electric bus



Location: Hongkong, China

MWT - Foldable Solar Module

Foldable Solar Panel Flexible foldable design,
For Camping/Boat/RV/Travel/Home/Car

- Flexible foldable design ● Only 3kg weight
- Easy to carry Lightweight ● Save space



Model 1

Power range
100W



Model 2

Power range
27W

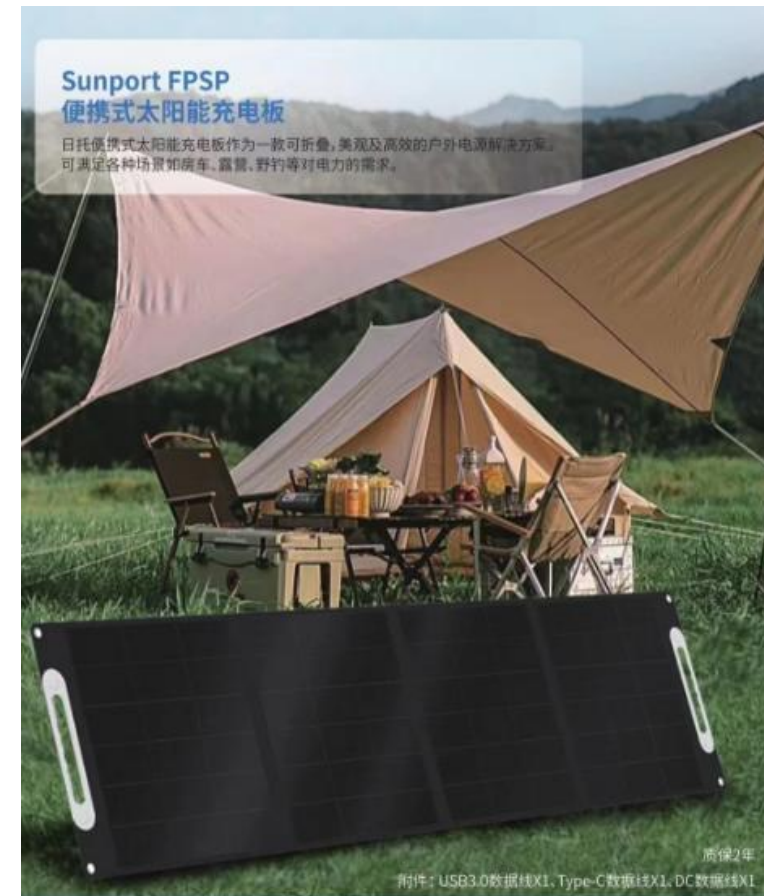


Model 3

Power range
200W



Foldable Solar Module



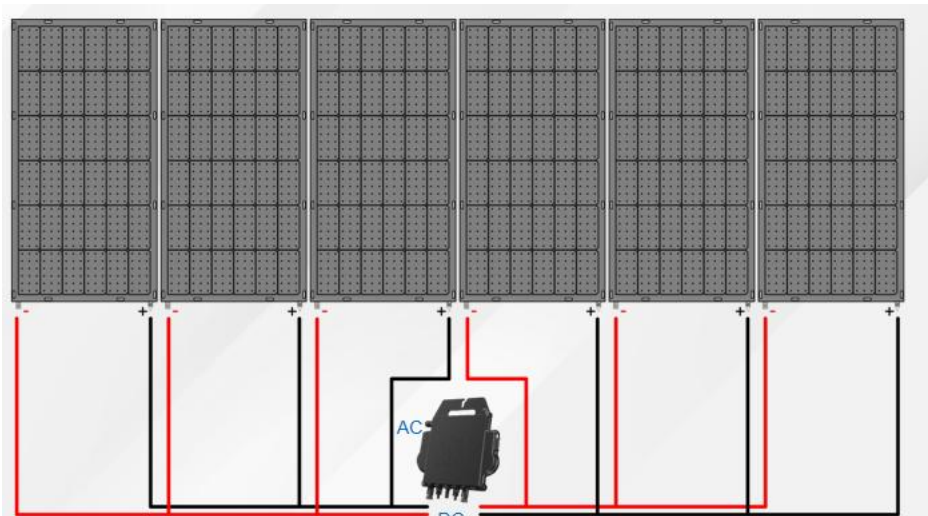
Flexible solar panel For Balcony



600W



800W





Innovation Changes the World

Thank you

